

# ANNUAL PERFORMANCE REPORT 2025 PUBLIC

PAPER AND PACKAGING:

19/7/5/P/PRO/20211123/022



EPR Waste Association  
of South Africa



EPR Waste Association  
of South Africa

## Table of Contents

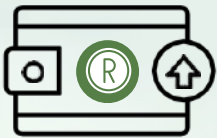
1. 2025 Annual Scheme Highlights	p1
2. Financial Overview	p2
3. Paper and Packaging Sector Report	p3
4. Projects & Impact Overview	p5
5. Governance Report	p7

# 2025 ANNUAL SCHEME HIGHLIGHTS

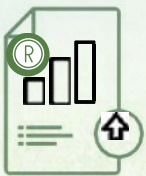
The eWASA Scheme is a comprehensive, rolling five-year action plan, collaboratively developed with stakeholders to meet producers' obligations under the Extended Producer Responsibility (EPR) Regulations of 2020. This scheme ensures the environmentally sound management of five critical waste streams: Electrical and Electronic Equipment, Paper and Packaging, Portable Batteries, Lubricant Oils, and others. By aligning with regulatory requirements, the plan embodies eWASA's commitment to sustainability and shared responsibility in waste management.



**R4.3M**  
Waste Handlers Refunds



**R2.8M**  
Waste Picker Service  
Collection Fee Paid



**R8 250.00**  
Waste Picker Support



**R2.4 M**  
SMME development



**65**  
New Jobs created

# FINANCIAL OVERVIEW

*Regulation 8(1)(c)(d)(iii), and 5A(1)(a)*

## FINANCIAL PERFORMANCE (CONSOLIDATED)

The 2025 financial overview demonstrates a conservative and disciplined approach to budgeting, with actual expenditure remaining closely aligned to approved forecasts. A measured strategy was applied throughout the financial year, supported by prudent fiscal management to ensure organizational stability while enabling continued progress on priority initiatives.

40% of the EPR fee was allocated to waste collection and end-of-life waste handling services, in accordance with the approved EPR fee allocation. Payments to waste handlers improved, leading to better utilization of the allocated budget for end-of-life product management.

## ADMINISTRATION BUDGET

eWASA has currently utilized 8.40% of the actual revenue billed and is within the 12% cap as per regulations 7 (7)(a) and 7(7)(b)(iii) of the EPR Regulations.

## PROJECT BUDGET

Both budgeted and actual project expenditure increased steadily over the financial year. As at year-end, actual expenditure amounted to R40 576 758.

# PAPER & PACKAGING SECTOR REPORT

## 1. Executive Summary

In 2025, the Paper and Packaging Scheme recorded significant progress in scope, data maturity, and sector participation, marked by a continued expansion in declared product types. The number of recognized product classes increased to 15 in 2025, reflecting the inclusion of additional material streams across metal packaging and key plastic polymer types (PS, HDPE, PET, and PP). This expansion was driven by sustained growth in producer membership, alongside strengthened member training, awareness programmes, and material categorization processes. This improved the accuracy and consistency of declarations and enhanced overall data quality & reporting integrity across the scheme.

The Paper & Packaging Sector in South Africa is represented by a vast number of local manufacturers and converters, but the EPR landscape and implementation has highlighted that this sector is very complex. This is due to large quantities of packaging imported as primary, secondary and tertiary packaging as the packaging arrives on our shores, it often ends up in the environment or in landfills since local markets and end of life options have not been considered or implemented. The sector operates in a very unpredictable environment and should be considered when analyzing performance in 2025.

## 2. Review of 2025 – Sector Progress and Achievements

### 2.1 Overview

In 2025, eWASA advanced true circularity through a locally driven, inclusive approach that expanded recycling infrastructure, strengthened producer and recycler partnerships, supported SMME development, and improved collection efficiency and local beneficiation across paper and packaging value chains. While strong progress was made, the complexity of the sector remains a key consideration, particularly for non-traditional and complex materials entering the market through imports without established end markets. Achieving recovery targets for these materials will require time, targeted investment, and ongoing collaboration, forming a critical foundation for the 2026 strategic priorities.

	Quantities placed on the market (tons)	Collection (tons)	Reuse (tons)	Recycling (tons)	Energy/recovery/other (tons)	Landfilled (tons)
<b>Corrugated cases/kraft papers</b>	20478	80754	19	80232	774	4
<b>Paper and paper packaging Labels</b>	9058	2698	0	2637	146	34
<b>Magazines</b>	115	4669	1	4663	1610	44
<b>Office &amp; graphic Paper Mixed &amp; other paper</b>	53	14123	0	14123	30362	0
<b>Plastic Thermoformed PET</b>	8067	5120	0	5079	58	2
<b>Plastic (Flexible) PET</b>	419	447	0	447	0	0
<b>Polyolefins Rigid polyolefin packaging</b>	1414	10621	53	10550	1584	18
<b>Polyolefins (flexible)</b>	20823	16567	0	16276	1160	0
<b>Polystyrene (expanded and High Impact)</b>	9492	3874	0	3873	1287	0
<b>Single use Products (PS, HDPE, PET &amp; PP)</b>	45	325	0	324	0	0
<b>Alcoholic beverage (ready to drink)</b>	2266	5298	0	5297	0	0
<b>Tinplate (Ferrous) Metal Packaging</b>	15357	3362	0	3336	2208	6

	Quantities placed on the market (tons)	Collection (tons)	Reuse (tons)	Recycling (tons)	Energy/recovery/other (tons)	Landfilled (tons)
Aluminium (non Ferrous) (Used Beverage Cans)	897	6608	0	6534	78	0
Polyolefins (Multi-layer films packaging)	2995	311	0	277	55	0
Polyvinyl Chloride (Rigid and flexible)	70	63	0	47	53	0

Figure 5: Performance against targets

## PROJECTS & IMPACT OVERVIEW

In line with our 2025 Extended Producer Responsibility (EPR) strategy, eWASA recognizes the importance of efficient and collaborative projects for identified products across our registered material streams. The Integrated project approach is an innovative approach to finding sustainable solutions that speaks to key objects of the EPR Regulations.

### 1. WASTE PICKER INTEGRATION

Regulation 5A(1)(m) and (p)

#### Overview

eWASA continues to play a pivotal role in strengthening South Africa's informal recycling sector through targeted, regulation-aligned interventions. These interventions are designed to enhance the efficiency, safety, and income security of waste reclaimers involved in collection, sorting, and trading activities across the country. In 2025, support to waste pickers was structured around three strategic focus areas:

Infrastructure and Personal Protective Equipment (PPE) support Training and Skills Development Waste Picker Service Fee remuneration.

#### Training and Skills Development

The African Waste Entrepreneurs Training Programme was rolled out across the Northern Cape, Eastern Cape, Western Cape, and Gauteng. The programme equips waste reclaimers with practical skills and operational knowledge aimed at:

- improving sorting and separation practices, reducing contamination of recyclable materials, and optimising income from recovered resources.

**A total of 192** waste reclaimers participated in the training programmes delivered in 2025.

#### Summary of Training Workshops

##### Waste Picker Service Fee

In accordance with the EPR Regulations, eWASA continued to support waste pickers through the payment of the Waste Picker Service Fee, disbursed via compliant buy-back centres affiliated with eWASA. In 2025:

- R 2 823 633.87 in Paper and Packaging Service fee paid.
- Payments facilitated through registered buy back centres.

Registered Buy Back Centres included: Greencycle; Hendrina Recycling; Inhle Indaloyakhe; Itsose; MKG Solutions; PPM Plastics; Qhabqolo; Top Recyclers; Smart Recycling; Greater Tygerberg Partnership; and Use-It Beneficiation Centre.

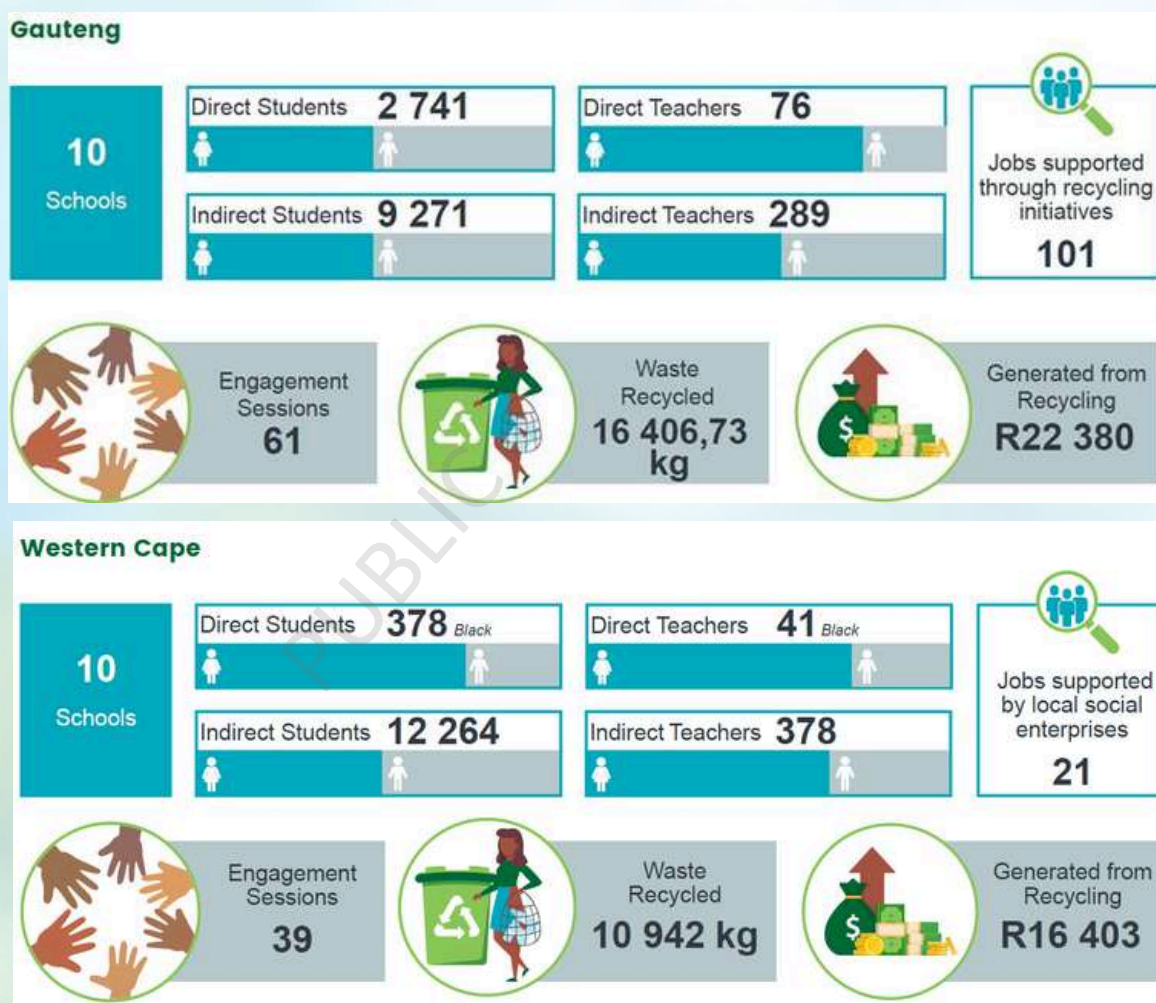


Figure 6: Schools-based Waste Management and Education Programme Statistics

### 3. Municipal Support

eWASA is committed to the spirit and letter of the EPR Regulations with respect to collaborating and cooperating with Municipalities across the country to achieve support and advance the Waste Management Economy. eWASA collaborated with various municipalities including George Local Municipality, Nelson Mandela Bay Metro Municipality, Namakwa District Municipality City of Johannesburg through PikitUp. In 2025, new MoUs were signed with Danhausser Local Municipality, Umngeni Local Municipality, Emadlangeni Local Municipality, Lepelle- Nkumpi Municipality, Nkomazi Local and Municipality Bergrivier Municipality. Through this partnership, we have seen a steady growth in waste picker integration programmes, delivery of separation at source initiatives, training, and public awareness programmes.

# GOVERNANCE REPORT

## PRODUCER BOARD MEMBERS

\*As per Regulation 11, the board is made up of producer members' representatives.

Name	Position
Keith Anderson	Founder & CEO
Andre Venter	Non-Executive Director
Marc Black	Non-Executive Director
Stephen Muli	Non-Executive Director
Michelene Locke	Non-Executive Director

Figure 10: eWASA's Board of Directors

## PRODUCER MEMBERS - PAPER AND PACKAGING PRODUCTS

Andreas Stihl (Pty) Ltd	PBSA (Pty) Ltd	Versa Distribution
Avery Dennison South Africa (Pty) Ltd	Philip Morris South Africa (Pty) Ltd	Unipak Plastics
Becton Dickinson (Pty) Ltd	Reel Papers (Pty) Ltd	Tikim Ve Tikim (Pty) Ltd
Canon South Africa	RS South Africa	Dilpack SA (Pty) Ltd
CIBAPAC (Pty) Ltd	Shave and Gibson Packaging (Pty) Ltd	Future Packaging and Machinery (Pty) Ltd
Core Computer Business (Pty) Ltd	Technopol SA (Pty) Ltd	Fixtrade 709 (Pty) Ltd t/a Jetline NSC
Eaton Electric South Africa (Pty) Ltd	Toyota South Africa Motors (Pty) Ltd	IMPO Distributors Group
Ever Star Industries (Pty) Ltd	Toyota Tsusho Africa	MVD Print Solutions (Pty) Ltd t/a First Labels
Goldpack (Pty) Ltd	Transpaco Flexibles (Pty) Ltd	Q Cap (Pty) Ltd
Huvepharma South Africa (Pty) Ltd	Volkswagen of South Africa (Pty) Ltd	Panbro Plastics cc
ISO Moulders ado Southey Holdings (Pty) Ltd	Wang On Fibres (Pty) Ltd	Perfetti Van Melle South Africa Proprietary Limited
Isowall Moulding (Pty) Ltd	Spar Encore Ltd	Cleopatra Care Products (Pty) Ltd
Italtile Ceramics (Pty) Ltd	Dashpay Proprietary Limit	Reënbungu Imports
Jaguar Landrover SA & SSA	The Spar Group Limited	Blue Falcon 188 Trading (Pty) Ltd
Johnson & Johnson Medical (Pty) Ltd	Epson Middle East FZCO-South Africa (Incorporated in the United Arab Emirates)	Tapestry Home Brands (Pty) Ltd
Kang Zhi Yuan (Pty)	BMW South Africa (Pty) Ltd	Roche Products (Pty) Ltd
L&G Tools and Machinery	Transpaco Specialised Films (Pty) Ltd	Cummins South Africa (Pty) Ltd
L'Oreal South Africa	Campari South Africa (Pty) Ltd	Shave and Gibson Security Printing (Pty) Ltd
Main Street 1310 (Pty) Ltd, t/a Twinsaver Group	AddPay Proprietary Limited	Humor Diagnostica (Pty) Ltd
Melbro Wholesale (Pty) Ltd	UPM Raflatac South Africa (Pty) Ltd	Mercedes- Benz South Africa
Morgancoat (Pty) Ltd	Emeral Green Enterprises (Pty) Ltd	Peninsula Drums (Pty) Ltd
Nissan South Africa (Pty)Ltd	Royal Canin SA (Pty) Ltd	Airlite Plastics (Pty) Ltd
Novus Packaging (Pty) Ltd t/a ITB	Label Pro Industries (Pty) Ltd	Greif South Africa (Pty) Ltd
WestconGroup SA (Pty) Ltd	Clorox (Pty) Ltd	Ceres Fruit Processors (Pty) Ltd

## PRODUCER MEMBERS - PAPER AND PACKAGING PRODUCTS (continued)

Dow Southern Africa Proprietary Limited	Africa CookWare (Pty) Ltd	Musco Lighting South Africa (Pty) Limited
Refsol International (Pty) Ltd	Apac Enterprise Trading	Forte Plastics
Dow Southern Africa Proprietary Limited	Africa CookWare (Pty) Ltd	Musco Lighting South Africa (Pty) Limited
Bordic	STI Investments Pty Ltd	Daikin Air Conditioning South Africa (Pty) Ltd
Bizerba Southern Africa (Pty) Ltd	Mars Consumer Products Africa (Pty) Ltd	BAEMP COM (Pty) Ltd
Symrise (Pty) Ltd	Namib Mills South Africa (Pty) Ltd	Exodus Packaging (Pty) Ltd
Exim International	Performance Brands (Pty) Ltd	Inkon Labels (Pty) Ltd
Turrim Brands	Heartland Foods (Pty) Ltd	Tiletoria Cape (Pty) Ltd
African Star Pac	Sprint Packaging a Division of Bidvest Paperplus (Pty) Ltd	Kellogg Company Of South Africa (Pty) Ltd

eWASA subscribes to stringent governance ethos and practices in its EPR Programme. This governance involves the system of processes, principles, and values that direct how eWASA implements its EPR obligations in its own right and when it interacts with its network of Producers, Recyclers, etc. across the five Waste Streams, viz Paper and Packaging, Lighting, Electrical and Electronic Equipment (EEE), Portable batteries and Lubricant Oils. Our governance model ensures that we meet our own obligations as a PRO and that our members and stakeholders are beholden to EPR regulations and comply with same.

Our strong corporate governance structures promote accountability, transparency, and ethical conduct. To this end we have put in place effective management systems, policies, and procedures that enable us to manage our operations in compliance with the EPR regulations. We have a thorough member onboarding process that ensures all legislative requirements are met including registering on applicable government portals like SAWIC, paying the applicable levies based on what members put out into the South African Market – and submitting interim and annual reports as they become due. Our PRO Scheme is audited every year by a team of External Auditors as required by the regulations. In addition to this, we also audit our members every year to make sure that they are compliant with the EPR regulations and all other applicable legislation. We require all our members to meet all their legal obligations as far as their operations and EPR measures are concerned.

A pivotal element of our governance is managing the product value chain effectively and to determining who is responsible for the EPR compliance, to what extent and the EPR fees applicable. This requires and necessitates that we work collaboratively with manufacturers, retailers, importers, brand owners and other stakeholders to ensure that waste is collected, recycled, and disposed of in an environmentally responsible and sustainable manner that creates jobs, empowers communities and saves the environment.

Our governance encompasses robust reporting and disclosure mechanisms that enable stakeholders to monitor the performance of product responsibility organizations in meeting their EPR obligations. We report to our members in various fora and to government on how we spend EPR Funds. The amount we spend on Administration falls within the limits and prescripts set by the EPR regulations i.e., not more than 12% in year 4 of the regulations. The majority of EPR funds are channeled to specific EPR and Waste Management Programmes which include some of the following:

- Payment of waste pickers
- Waste Pickers Integration & support
- Waste Education and Awareness Campaigns at Schools and Communities
- Waste Equipment and Infrastructure
- Recycling Activities
- Beneficiation of Waste
- Waste to Art Initiatives
- Municipal Waste Projects
- Secondary End-Market Development
- Research and Development
- Public relations
- Employment creation ventures

Our governance includes regular statutory reporting on waste volumes, recycling rates, and compliance with regulatory requirements. We require our members to meet the reporting obligations timely with consequences for non-submission which result in members losing their compliance status.

Ultimately a strong governance framework is critical for us if we are to successfully implement the EPR regulations in the South African context for electronic waste, lighting, paper and packaging, and portable batteries sectors. Such governance enables us to promote sustainable and sound waste management practices, that not only protect the environment for future generations but creates jobs and opportunities now

**END**