

eWASA Public

ANNUAL REPORT

2024

March 2025

19/7/6/E/PRO/20210512/001

19/7/5/P/PRO/20211123/022

19/7/7/L/PRO/20211123/004

19/7/5/P/PRO/20230710/045

19/7/7/L/PRO/20240429/053



TABLE OF CONTENTS

| | | | |
|---------------------------------|----|-------------------------------------|---|
| | | 2024 SCHEME HIGHLIGHTS | 1 |
| | | FINANCIAL OVERVIEW | 2 |
| | | ELECTRICAL AND ELECTRONIC EQUIPMENT | 3 |
| | | LIGHTING | 4 |
| | | PORTABLE BATTERIES | 5 |
| | | PAPER AND PACKAGING | 6 |
| WASTE PICKER INTEGRATION | 7 | | |
| SMME AND ENTERPRISE DEVELOPMENT | 8 | | |
| MUNICIPAL CO-OPERATION | 9 | | |
| EDUCATION & AWARENESS | 10 | | |
| GOVERNANCE REPORT | 11 | | |

2024 SCHEME HIGHLIGHTS

The eWASA Scheme is a 5-year rolling action plan developed with stakeholders to fulfil producers' obligations under the Extended Producer Responsibility regulations, 2020 and ensures the environmentally sound management of five waste streams viz, Electrical and Electronic Equipment, Paper and Packaging, Lighting, Portable Batteries and Lubricant Oils.



6280
PPE ITEMS DONATED



R827,204
Service Collection Fee Paid



R1,99M
Waste Picker Support



R101.44M
Revenue collected



R6.58 M
SMME development



180
New Jobs created



74085 tons
Paper and Packaging Collected



12811 tons
Electrical and Electronic Equipment Collected



R17,74M
Spent on Infrastructure

18
Municipal Engagements



FINANCIAL OVERVIEW

FINANCIAL PERFORMANCE

The 2024 financial overview reflects a conservative budget approach due to delayed revenue collection from late EPR fee submissions and the uncertainty surrounding concurrence. These delays have impacted cash flow and producer confidence, necessitating careful fiscal management to ensure stability and progress on key initiatives

Despite these challenges, we have maintained a steadfast commitment to fiscal responsibility and following a cautious start to the year, we have increased our actual spend in the latter half of 2024.

Furthermore, 66% of the EPR Fee was allocated to collection and end of life waste handling process services as depicted in the breakdown. Payments to recyclers improved, leading to better utilization of the allocated budget for end-of-life product management.

Revenue
R101.44m

Admin Expenses
R7,93m

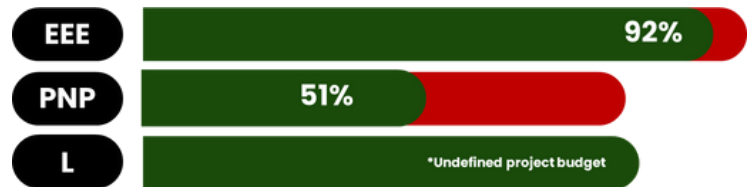
Admin %
7.82%

ADMINISTRATION BUDGET

The total actual revenue for 2024 amounts to R101 435 893, with an actual expenditure on administration costs amounting to R7 929 478. eWASA has currently utilized 7.82% of the budgeted revenue, as detailed in annexure 1 and annexure 2.

PROJECT BUDGET

The budgeted and actual spend have consistently increased from 2021/2022 to 2024. The budget rose from over R15 million to around R35.5 million. Actual expenditure surged in 2023 due to project implementation and further increased in 2024 following project approval and fund releases.



*R35 543 354 million combined budget across EEE, PNP and Lighting.
*38% of combined revenue



*R26 980 662 million combined spend across EEE, PNP and Lighting
*76% of Budget utilised

ELECTRICAL AND ELECTRONIC EQUIPMENT

EXECUTIVE SUMMARY

In 2024, eWASA made significant strides in its Extended Producer Responsibility (EPR) initiatives, building upon the foundations established in 2023. The 2024 figures reflect an upward trajectory from 2023 as eWASA had achieved its collection target of 33% for year 2 of implementation. In year 3 of implementation, 2024, we achieved a collection target of 47% demonstrating notable improvement through enhanced participation from producers and recyclers, streamlined reporting mechanisms, and increased compliance with regulatory requirements. This accounts for 21% of the sector target.

27465
tons POM

12811
tons collected



PERFORMANCE AGAINST TARGETS

eWASA achieved 47% collection rate in respect of volumes the EEE Scheme producers declared as placed on market for 2024. A total of 11797 tons was diverted through recycling (1279 tons) and recovery (10518 tons). A further 1248 tons was diverted through re-use which includes refurbishment.



10518 tons
Recovered



1279 tons
Recycled



1248 tons
Re-used

CONCLUSION

In 2024, eWASA achieved a 47% EEE recycling collection rate despite challenges, reflecting its commitment to sustainability. Key initiatives include lithium battery recycling and new plant commissioning. While some projects faced delays, eWASA's proactive approach and industry collaboration ensure continued progress. With an expanding recycler network, it remains well-positioned for future success. Moving forward, eWASA will enhance South Africa's EEE recycling ecosystem, driving sustainability and a circular economy.

LIGHTING

EXECUTIVE SUMMARY

In 2024, eWASA navigated significant challenges and achievements in the lighting recycling sector. While the recycling of LED lighting and luminaires showed remarkable progress, far surpassing expectations, the automotive lighting sector faced substantial setbacks due to market limitations.

To address these constraints, eWASA has actively pursued strategic solutions, including the commissioning of a locally sourced lighting recycling plant to be operational in 2025, this plant will process LED, luminaire, and automotive lighting waste through an advanced separation system.

Ongoing efforts include strengthening collaborations with the automotive sector, expanding collection networks through retail take-back schemes, and investing in specialized recycling technologies. By fostering these initiatives, eWASA remains committed to improving the sustainability of lighting waste management and advancing South Africa's circular economy.

PERFORMANCE AGAINST TARGETS

| | (iii) New LED Sources | (iv) Other Light Emitting Devices | (i) Gas Discharge Lamps | | *Mutually exclusive data to what is placed on market | (vii) Off Grid Solar powered Lighting |
|--------------------------------|-----------------------------|-----------------------------------|---|--|--|---------------------------------------|
| | LED lighting and luminaires | Vehicle/Automotive lighting | Low pressure discharge lighting fluorescent | Gas Discharge Lamps (lighting for special purpose) | Lighting from other electronic equipment | Off Grid Solar powered lighting |
| Placed on Market (tons) | 8 | 145,86 | 0,03 | 7,27 | 0 | 3,74 |
| Collection (tons) | 245 | 6 | 0,19 | 0 | 13.48 | 0 |
| Recycling (tons) | 245 | 6 | 0 | 0 | 13.48 | 0 |
| Recovery (tons) | 0 | 0 | 0 | 0 | 0 | 0 |
| Collection % | 3062% | 4% | 0% | 0% | - | 0% |
| Recycling % | 3062% | 4% | 0% | 0% | - | 0% |
| Recovery % | 0% | 0% | 0% | 0% | - | 0% |
| Published Target % Y3 | Collection 15% | 20% | 25% | 19% | 15% | 15% |
| Published Target % Y3 | Recovery 90% | 80% | 96% | 96% | 90% | 90% |
| Published Target % Y3 | Recycling 85% | 60% | 95% | 93% | 85% | 85% |



In 2024, eWASA saw notable performance variations across different lighting product categories. LED lighting and luminaires demonstrated exceptional overperformance, achieving impressive collection and recycling rates, though recovery remains a gap that eWASA plans to address to meet the 90% recovery target.

CONCLUSION

Overall, 2024 showed significant progress, especially in LED and luminaire collections. While challenges remain in automotive and other lighting streams, eWASA's proactive measures, infrastructure development, and strengthened partnerships set a positive foundation for improved performance in 2025.

PORTABLE BATTERIES

EXECUTIVE SUMMARY

The internal plant is part of eWASA's modular design, allowing for additional facilities to be established in strategic locations across South Africa. This approach will enhance nationwide access to recycling services. To support the pilot phase, eWASA has identified eight recyclers across the country who will be provided with collection bins, currently in the final stages of development. These bins will be rolled out for collection, helping to facilitate the piloting phase and ensuring an efficient and sustainable process. The lighting plant, designed to complement the battery recycling process, is scheduled to be commissioned and fully operational by the end of March 2025.

PORTABLE BATTERY RECYCLING PLANT



**Plant and zone
layout concepts
defined.**

**General Process
Mapped**

**Trials on Plant
equipment to
commence in Q2
2025**

PAPER AND PAPER PACKAGING

EXECUTIVE SUMMARY

2024 marked the fourth year of implementation of the EPR regulations in South Africa, a milestone that underscores the continued evolution of eWASA's role in supporting producers and recyclers across the value chain of identified material streams.

eWASA has established itself as a key facilitator in driving compliance and sustainability within the framework of these regulations. Representing a diverse member base, eWASA includes large brand owners, retailers, importers, local raw material suppliers, manufacturers, converters, and recyclers. Through sustained engagement, we provided comprehensive support to these members, enabling them to navigate challenges related to material categorisation, tonnage calculation, and data reporting. While progress has been achieved, the journey of onboarding new members and addressing free riders remains ongoing. eWASA remains committed to fostering collaboration, improving compliance, and driving innovation across the value chain

PERFORMANCE AGAINST TARGETS

In 2024, the Paper and Packaging scheme recorded significant progress, highlighted by an expansion in declared product types. The number of product classes increased from 8 in 2023 to 11 in 2024, with the inclusion of materials such as metal packaging and some single-use plastics (PS, HDPE, PET & PP). This expansion reflects growth in the number of producer members, as well as improved member training, awareness, and material categorisation processes, which have strengthened data quality.

74085
tons POM

*Total for 11 Product Categories in Notice



79 073
tons collected

*Total for 11 Product Categories in Notice



| | Placed on market (tons) | Recovery (tons) | Recycled (tons) | Collected (tons) | Recycled % | Collected % | DFFE Collection Target Y3 | DFFE Recycled Target Y3 |
|--|-------------------------|-----------------|-----------------|------------------|------------|-------------|-----------------------------|-----------------------------|
| Paper packaging material/Corrugated cases/Kraft papers | 42129,28 | 2 294 | 45 725 | 51 059 | 109% | 121% | 70% | 68% |
| Plastic thermoformed PET | 658,37 | 94 | 2 502 | 2 605 | 380% | 396% | 19% | 17% |
| Plastic flexible PET | 589,16 | 108 | 565 | 674 | 96% | 114% | 30% | 27% |
| Polyolefins Rigid Packaging | 616,41 | 448,55 | 7 666 | 8 204 | 1244% | 1331% | 60% | 45% |
| Polyolefins flexible | 17037,34 | 138,57 | 10 890 | 11 038 | 64% | 65% | 62% | 48% |
| Polystyrene | 7824,23 | 4 | 2 570 | 2 608 | 33% | 33% | 33% | 30% |
| Polyolefins (multi-layer plastic packaging) | 2275,17 | 5 | 177 | 213 | 8% | 9% | 25% | 20% |
| Poly Vinyl Chloride (PVC) | 63,78 | 0 | 15 | 17 | 24% | 27% | 7,00% | 6,00% |
| Tinplate (Ferrous) | 147,73 | 1079 | 14 | 1109 | 9% | 751% | 58% | 55% |
| Aluminium (non-Ferrous) Used bev Cans | 623,04 | 54,81 | 1262,169 | 1317,76 | 203% | 212% | 66% | 33% |
| Injection mould & Blow moulded | 66,95 | 0 | 227,858 | 228,42 | 340% | 341% | 70% | 40% |
| *Uncategorized Glass | 970 | 0 | 0 | 0 | 0 | 0 | *Uncategorized declarations | *Uncategorized declarations |



Backing paper and label working groups successfully launched a new thermal insulation end market to clients.

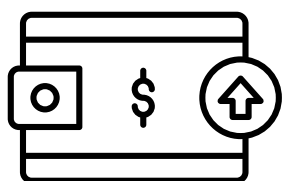


Polystyrene working group deployed infrastructure in Durban, Limpopo, George, Cape Town, Johannesburg, and Pretoria

WASTE PICKER INTERGRATION

The EPR Waste Association of South Africa (eWASA) recognizes the indispensable role of waste pickers in the waste value chain, particularly in the separation at source and collection of recyclables. Globally and within South Africa, waste pickers have demonstrated their pivotal contribution to sustainable waste management practices. One of eWASA's key initiatives involves ensuring fair compensation for waste pickers through the payment of EPR waste picker collection service fees, aligning with regulatory guidelines.

However, the registration and payment process for Waste Pickers faced hurdles due to the complex and costly Waste Pickers Registration Process, prompting the development of an alternative system by eWASA. In response to challenges surrounding delayed payments to Waste Pickers, primarily attributed to the cumbersome and time-consuming nature of the Waste Pickers Registration System, significant reforms have been implemented. The following measures have been enacted to streamline the payment process, including back payments, to ensure timelier disbursement of service fee.



Service Collection Fee Paid

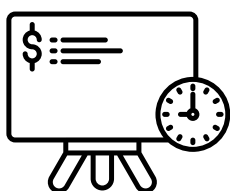
*Disbursements made in 2024 only

R827,204.23



support

R1,99M



Waste Pickers Paid

3097



Waste Pickers Trained

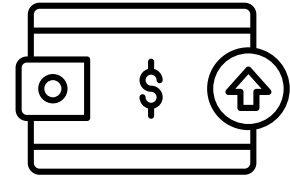
*Total count trained in 2024 only

313

SMME & ENTERPRISE DEVELOPMENT



R6.58 M
Development Funds



83
SMMEs Trained



MUNICIPAL CO-OPERATION AND ENGAGEMENT

eWASA is committed to the spirit and letter of EPR Regulations with respect to collaborating and cooperating with Municipalities across the country to achieve to support and advance the Waste Management Economy. Since 2022 eWASA has been forging partnerships with Municipalities and implementing Infrastructure and Recycling Projects that are creating new Wastepreneurs, jobs and increasing tonnages of identified products. In addition, a recent highlight achievement is the finalised agreement and signed MOU with Pikitup after months discussions which will serve a strategic partnership as Pikitup is the implementing waste management agency for the City of Johannesburg. This MOU will allow eWASA access to critical Recycling and infrastructure projects in the city. Furthermore, it will allow us to engage with recycling cooperatives and waste pickers in the City of Johannesburg.

6
Provinces



18
Engagements



| Municipality | Infrastructure | | SMME Development | Training | Waste Picker Integration |
|----------------------|----------------|---|------------------|----------|--------------------------|
| Mogale City | ✓ | ✓ | ✓ | ✓ | ✓ |
| Ratlou Municipality | ✓ | | | ✓ | ✓ |
| Steve Tshwete | ✓ | | | | ✓ |
| Buffalo City | ✓ | | | ✓ | ✓ |
| City of Johannesburg | | | ✓ | ✓ | ✓ |
| Nelson Mandela Bay | | | | | ✓ |

EDUCATION AND AWARENESS



The development of the eWASA Academy is a significant milestone aimed at addressing the training needs of eWASA members across various waste streams. The academy's long-term goal is to evolve into a fully SAQA-accredited training facility.

During 2024, the academy successfully trained 83 SMMEs and 313 waste pickers in the following areas:

- Recycling of Waste
- Business Skills Training

All participants received certificates of completion for training sessions conducted in Mogale City, Alexandra (Gauteng), Rustenburg Municipality, Kouga Municipality, and Nelson Mandela Bay Metropolitan Municipality, with future sessions planned for KwaZulu-Natal, Limpopo, Western Cape, Northern Cape, Free State, and Mpumalanga.

This training initiative was facilitated by Seoposengoe Training Consultancy, a Level 1 BBBEE, black female-owned training facility established in 2002. The consultancy is accredited with Services SETA, FoodBev SETA, TETA (Transport Education Training Authority), ETDP SETA, and LG SETA



WESSA-EWASA SCHOOLS PROGRAMME AND WASTE MANAGEMENT PROJECT

Our waste management education initiative achieved key milestones throughout the year, engaging teachers and students while promoting environmental sustainability.

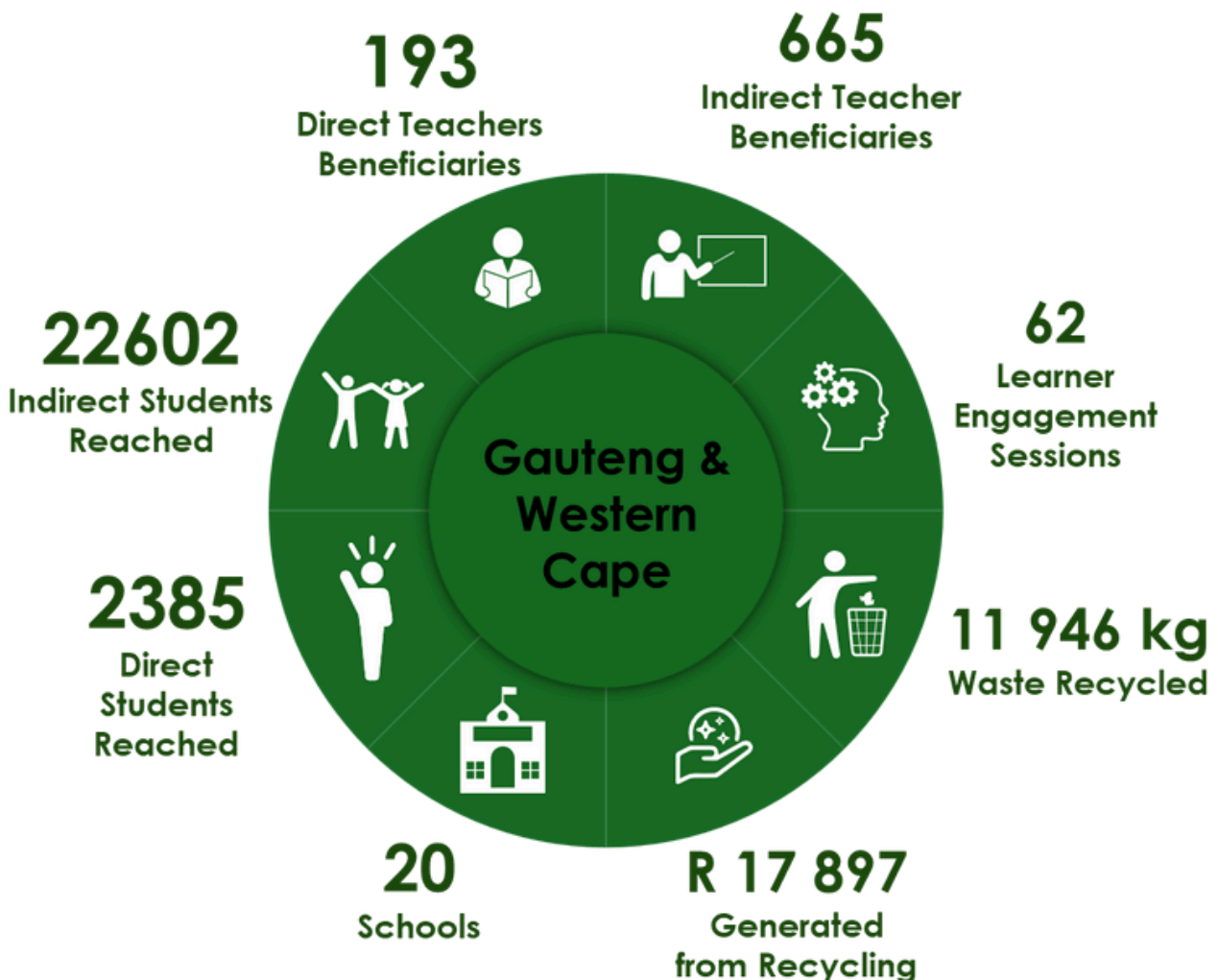
In Quarter 1, we launched the program with a teacher workshop introducing the WESSA Schools Programme and Fundisa for Change methodology. Students explored waste concepts, including classification and recycling, while Global Recycling Day featured an excursion to the Kraaifontein Waste Facility.

Quarter 2 expanded the focus to environmental and health impacts. Assemblies addressed poor waste management's effects on community well-being, and a follow-up teacher workshop reinforced project goals and methodologies.

Quarter 3 introduced creative sustainability initiatives, including an upcycling fashion show that showcased waste reuse. Teachers learned about the Circular Economy, and Sustainability and Exit Strategy plans were developed to ensure project longevity.

In Quarter 4, students visited an e-waste facility to gain hands-on experience in electronic waste management. The year concluded with the eWASA Awards, recognizing the achievements of participating Eco-Schools in environmental stewardship.

All planned activities were successfully completed, ensuring a well-rounded and impactful program that strengthened waste education, encouraged sustainable practices, and empowered participants to drive positive environmental change.



MEDIA REVIEW



eWASA's social media and outreach efforts during the 2024 have been extraordinarily successful, resulting in increased engagement, brand awareness, and thought leadership in the waste management sector.

Consistently published thought-provoking blog posts and outreach articles to establish eWASA as a thought leader in sustainability.

Content focused on diverse topics related to waste management, circularity, sustainability, recycling, and environmental protection.

Secured media placements in reputable publications, including Sustainability Magazine, Leadership Magazine, TechCentral, The Green Agenda, EarthNews365, and The Citizen

NEWSLETTERS FOR 2024

Throughout 2024, eWASA published weekly newsletters to keep stakeholders informed about its activities and achievements. These newsletters included:

Articles on recycling initiatives, eWASA activities, community engagement, waste management best practices, thought leader articles, and industry news.

Achieved an open rate of 27% and a click-through rate of 4%

SOCIAL MEDIA RESULTS 2024



6%
Following Increase

52 000
Engagements

54 000
Impressions

EWASA WEBSITE

The eWASA website shows consistent monthly growth of 4% in users and new users

- Informative pages such as: 10 Answers to Frequently Asked E-Waste Questions and 8 types of e-Waste and How to Recycle them, showed the best performance, with 21 726 and 14 485 views respectively.

Most active users are based in South Africa

GOVERNANCE REPORT

PRODUCER BOARD MEMBERS

*As per regulation 11, the board is made up of producer members representatives.

| Name | Position |
|-----------------|------------------------|
| Keith Anderson | Founder & CEO |
| Andre Venter | Non-Executive Director |
| Marc Black | Non-Executive Director |
| Stephen Muli | Non-Executive Director |
| Zama Mkhize | Non-Executive Director |
| Michelene Locke | Non-Executive Director |

PRODUCER MEMBERS

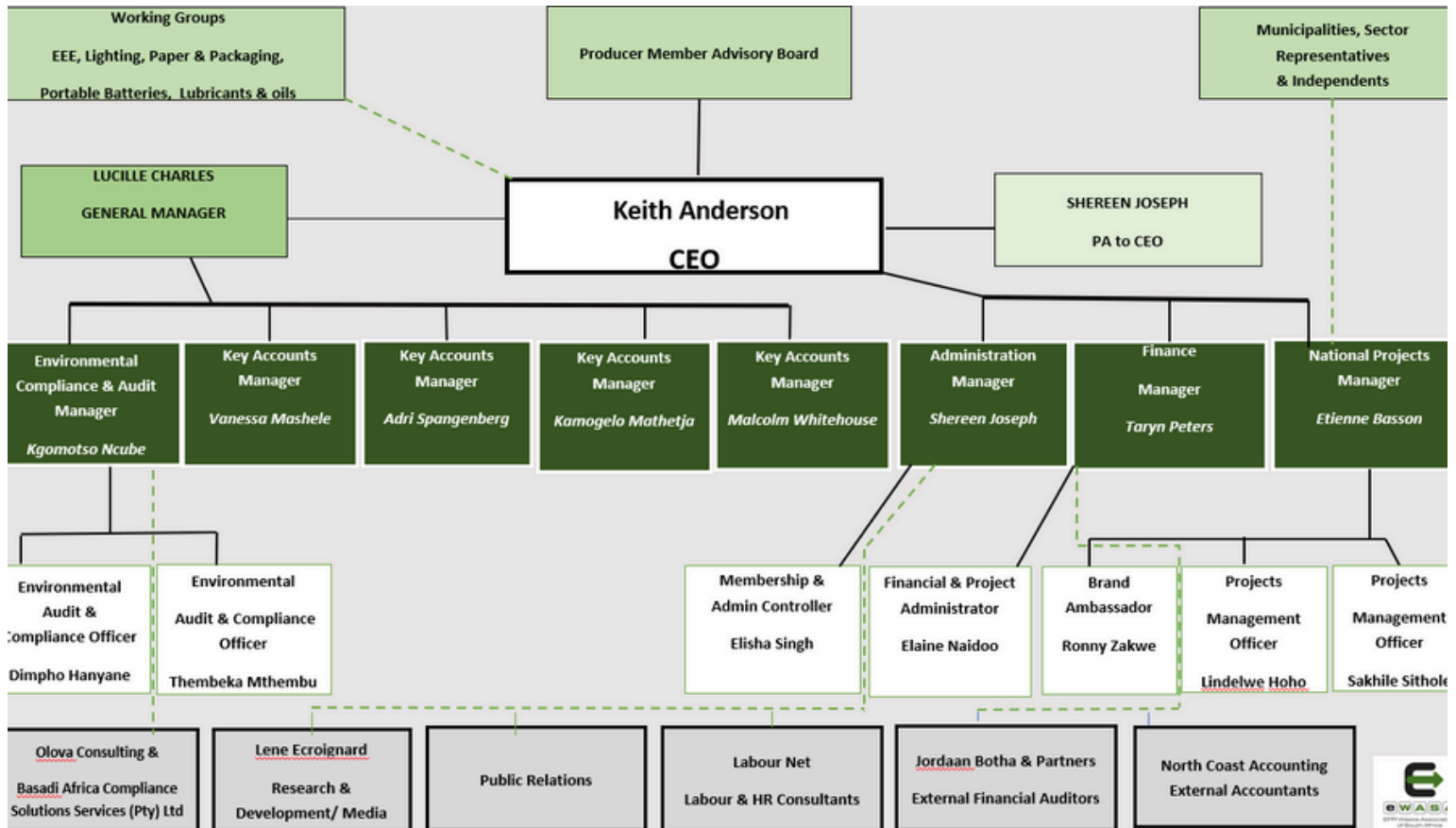


- ADE Labelling and Barcoding (Pty) Ltd
- Africa CookWare (Pty) Ltd
- Africa Original Imports & Export (Pty) Ltd t/a Namib Biltong
- Bambisana Distribution (Pty) Ltd
- Becton dickinson Pty Ltd
- BMW South Africa Pty Ltd
- Boxer superstores
- Campari South Africa (Pty) Ltd
- Capslock Projects Ltd
- Colpak (Pty) Ltd
- Dartpac (Pty) Ltd
- Emeral green enterprises (pty) ltd
- Empros Trading
- EXB Electric
- Epson Europe B.V. (South Africa)
- G AND A LABELS (PTY) LTD
- Garmin Southern Africa (Pty) Ltd
- Heartland Foods (Pty) Ltd
- Holdsport Group (Pty) Ltd
- Huvepharma South Africa (Pty) Ltd
- Independent Packaging & Print (IPAK)
- Isollite Cornice Moulding (Pty)Ltd t/a Hebcooler
- ISO Moulders ado Southey Holdings (Pty) Ltd
- Jungheinrich South Africa (Pty) Ltd
- KLB Engineering
- L & G Tools
- Label Leaders (Pty) Ltd
- Label Pro Industries (PTY) LTD
- Mars Consumer Products Africa (PTY) LTD
- New Lab Industries (Pty) Ltd
- Omron Electronics (Pty) Ltd
- Prima Pasta & Biscuits (Pty) Ltd
- Prism Projects (Pty) Ltd
- Royal Canin SA (Pty) Ltd
- Scentworks (Pty) Ltd
- Sir Vape Pty Ltd
- Spar Encore Ltd
- Sprint Packaging a Division of Bidvest Paperplus (Pty) Ltd
- Telkom SA LTD
- Tikim Ve Tikim (Pty) Ltd
- TTC Sales & Marketing (Pty) Ltd
- Unipak Plastics
- Vaperite Pty Ltd
- Wang On Fibres (Pty) Ltd
- WasteCorp SA
- Wicked Imports (PTY) Ltd



GOVERNANCE REPORT

COMPANY STRUCTURE



TRANSFORMATION

eWASA demonstrates a steadfast commitment to transformation within the sector, underpinned by our strategic approach to fostering diversity and inclusion among our internal human resources. With a robust staff complement, we proudly maintain a workforce that reflects a dynamic blend of youth, females, and compliance with standards. Specifically, our team comprises a diverse mix of eight (8) youth, with African employees being the most prominent group, ensuring a vibrant and dynamic work environment. Furthermore, we have achieved a commendable gender balance, with females constituting a sizable portion of our staff and 50% of our management team. This commitment to gender equity, especially in leadership roles, highlights our dedication to empowering women and fostering a progressive and inclusive workplace. This diversity enriches our organizational culture and drives our mission to lead transformation within the sector.